

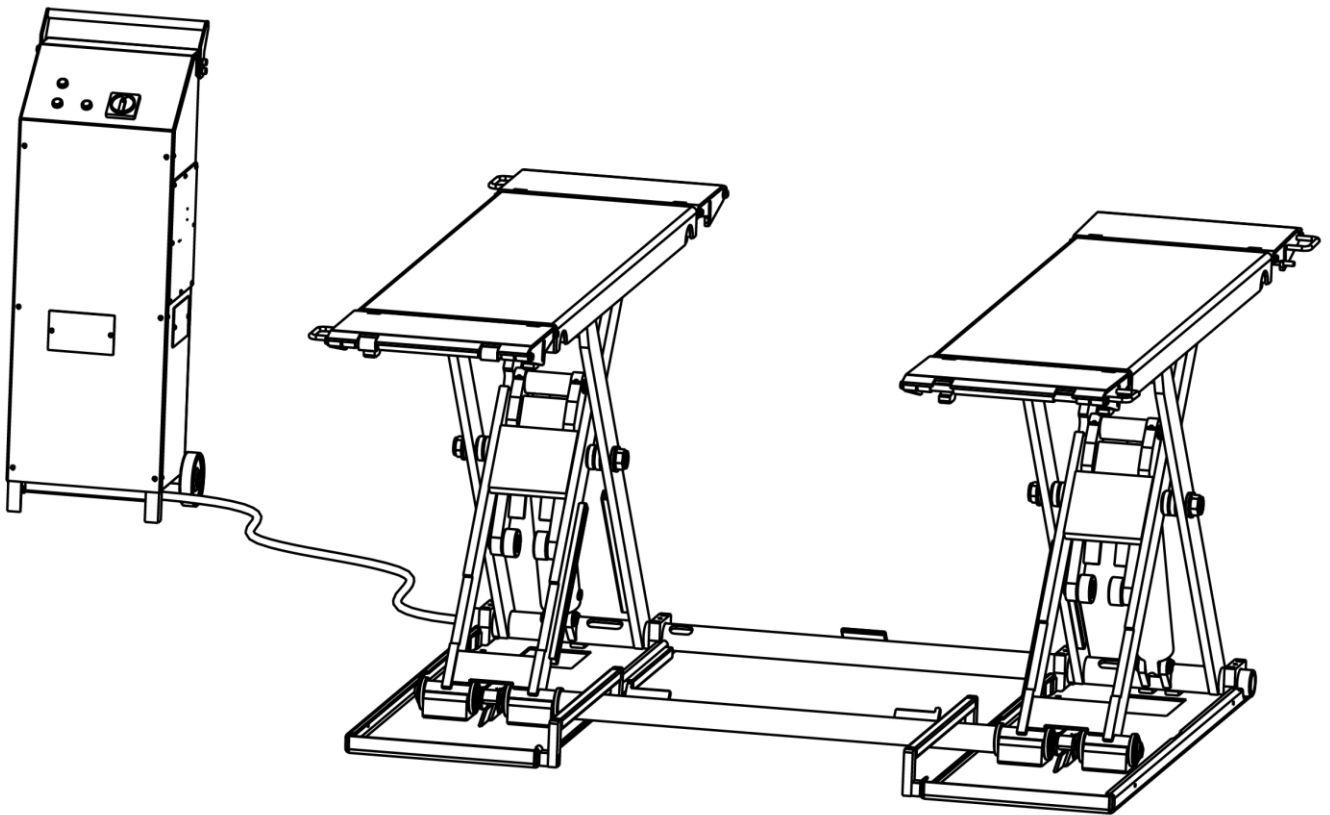
Model No. EE-MR35

Short Platform Scissor Lift, Mid Rise
Lifting Capacity, 3500KG
Electrical Release

**Installation, Operation
and Parts Manual**



EAE



Distributed by

Please read this entire manual carefully and completely before installation or operation of the lift.

Date: 11/06/2024

www.eae-ae.com

IMPORTANT NOTES	3
SAFETY NOTES	4
1.1 Operation of lifting platforms	4
1.2 Checking of the lifting platforms.....	4
1.3 Important safety notices	5
1.4 Warning labels.....	6
1.5 Potential safety risks	7
1.6 Noise level.....	7
PACKING, STORAGE AND TRANSPORTATION	8
2.1 The lift was dismantled into 3 parts for transportation.....	8
2.2 Storage	8
2.3 Lifting and handling.....	8
PRODUCT DESCRIPTIONS	9
3.1 General descriptions	9
3.2 Construction of the lift.....	9
3.3 Dimensions.....	10
3.4 Safety device descriptions	11
3.5 Technical data	11
INSTALLATION INSTRUCTIONS	12
4.1 Preparations before installation	12
4.2 Installation attentions.....	13
4.3 General Installation Steps	13
4.4 Items to be checked after installation.	14
OPERATION INSTRUCTIONS	15
5.1 Precautions	15
5.2 Descriptions of control box.....	15
5.3 Flow chart for operation	15
5.4 Operation instructions	16
5.5 Install the optional mobile kit to move the lift	17
TROUBLE SHOOTING	18
MAINTENANCE	19
Annex 1, Floor plan for fixed installation	21
Annex 2, Electrical diagrams and parts list	22
Annex 3, Hydraulic diagrams and parts list.....	25
Annex 4, Mechanical exploded drawings and parts list.....	29

IMPORTANT NOTES

Before start up, connecting and operating EAE products, it is absolutely essential that the operating instructions/owner's manual and, in particular the safety instructions are studied carefully. By doing so you can eliminate any uncertainties in handling EAE products and thus associated safety risks up front; something which is in the interest of you own safety and will ultimately help avoid damage to the device, When an EAE product is handed over to another person, not only the operating instructions but also the safety instructions and information on its designated use must be handed over to the person.

By using the product you agree the following conditions:

Copy right

The enclosed instructions are the property of EAE or its supplier, and are protected against duplication and reproduction by copyright laws, international agreements, and other domestic legislation. The reproduction or disclosure of instructions or an extract thereof is prohibited and offenders are liable to prosecution; EAE reserves the right or initiates criminal proceedings and asserts claims for damages in the event of infringements.

Warranty

The use of non-approved hardware will result in a modification of our products and thus to the exclusion of any liability or warranty, even if such hardware has been removed again in the interim.

It is not permissible to make any changes to our products and these are not only to be used together with genuine accessories and genuine replacement parts. Otherwise any warranty claims will be invalid.

Liability

The liability of EAE is limit to the amount that the customer has actually paid for this product. This exclusion of liability does not apply to damages caused through willful misconduct or gross negligence on the part of EAE.

All information in this manual is believed to be correct at time of publication.

EAE reserves the right to amend and alter technical data and composition without prior notice.

Please confirm at time of ordering.

SAFETY NOTES

1.1 Operation of lifting platforms

This lift is specially designed for lifting motor vehicles. Users are not allowed to use it for any other purposes. The applicable national regulations, laws and directives must be observed.

Only users aged 18 or above who have been instructed on how to operate the lifting platform and have proven their ability to do so to the owner are to be entrusted with unsupervised operation of lifting platforms. The task of operating the lifting platforms must be granted in writing.

Before loading a vehicle onto the lifting platform, users should study the original operation instructions and familiarize themselves with the operating procedures in several trial runs.

Lift vehicle within the rated load. Don't attempt to raise vehicles with excessive weight.

1.2 Checking of the lifting platforms

Checks are to be based on the following directives and regulations:

- Basic principles for testing lifting platforms
- The basic health and safety requirements
- Harmonized European standards
- The applicable accident prevention regulations

The checks are to be organized by the user of the lifting platform. The user is responsible for appointing an expert or qualified person to perform checking. It must be ensure that the person chosen satisfies the requirements.

The user bears special responsibility if employees of the company are appointed as experts or qualified persons.

1.2.1 Scope of checking

Regular checking essentially involves performing a visual inspection and a functional test. This includes checking the condition of the components and equipment, checking that the safety systems are complete and functioning properly and that the inspection log book is completely filled in. The scope of exceptional checking depends on the nature and extent of any structural modification or repair work.

1.2.2 Regular checking

After initial commissioning, lifting platforms are to be checked by a qualified person at intervals of not longer than one year.

A qualified person is somebody with the training and experience required to possess sufficient knowledge of lifting platforms and who is sufficiently familiar with the pertinent national regulations, accident prevention regulations and generally acknowledged rules of engineering to be able to assess the safe operating condition of lifting platforms.

1.2.3 Exceptional checking

Lifting platforms with a lift height of more than 2 meters and lifting platforms intended for use with people standing under the load bearing elements of the load are to be checked by an expert prior or reuse following structural modifications and major repairs to load bearing components.

An expert is somebody with the training and experience required to possess specialist knowledge of lifting platforms and who is sufficiently familiar with the pertinent national work safety regulations, accident prevention regulations and generally acknowledged rules of

engineering to be able to check and give an expert opinion on lifting platforms.

1.3 Important safety notices

1.3.1 Recommend for indoor use only. Do not expose the lift to rain, snow or excessive moisture.

1.3.2 Only use this lift on a surface that is stable and capable of sustaining the load. Do not install the lift on any asphalt surface.

1.3.3 Read and understand all safety warnings before operating the lift.

1.3.4 Do not leave the controls while the lift is still in motion.

1.3.5 Keep hands and feet away from any moving parts. Keep feet clear of the lift when lowering.

1.3.6 Only these properly trained personnel can operate the lift.

1.3.7 Do not wear unfit clothes such as large clothes with flounces, ties, etc., which could be caught by moving parts of the lift.

1.3.8 To prevent evitable incidents, surrounding areas of the lift must be tidy and with nothing unsecured.

1.3.9 The lift is simply designed to lift the entire body of vehicles, with its maximum weight within the lifting capacity.

1.3.10 Always insure the safety locks are engaged before any attempt to work near or under the vehicle. Never remove safety related components from the lift. Do not use if safety related components are damaged or missing.

1.3.11 Do not rock the vehicle while on the lift or remove any heavy component from vehicle that may cause excessive weight shift.

1.3.12 Check at any time the parts of the lift to ensure the agility of moving parts and the performance of synchronization. Ensure regular maintenance and if anything abnormal occurs, stop using the lift immediately and contact our dealers for help.

1.3.13 Lower the lift to its lowest position and do remember to turn off the power when service finishes.

1.3.14 Do not modify any parts of the lift without manufacturer's advice.

1.3.15 If the lift is going to be left unused for a long time, users are required to:










- a. Disconnect the power;
- b. Empty the oil tank;
- c. Lubricate the moving parts with hydraulic oil.

WARNING: The warnings, cautions and instructions discussed in this instruction manual cannot cover all possible conditions and situations that may occur. It must be understood by the operator that common sense and caution are factors which cannot be built into this product, but must be supplied by the operator.


Attention: For environment protection, please dispose the disused oil in a proper way.

1.4 Warning labels

All safety warning labels are clearly depicted on the lift to ensure that the operator is aware of and avoid the dangers of using the lift in an incorrect manner. The labels must be kept clean and they have to be replaced if detached or damaged. Please read carefully the meaning of each label and memories them for future operation

	CAUTION
	The operation of the lift is permitted by authorised persons only.
	CAUTION
	Correctly position the vehicle so as to prevent overturning.
	Center of gravity shall not be placed beyond the area between two support arms.
	CAUTION
	Observe the load carrying device throughout the motion of the lift.
	CAUTION
	Carry out maintenance regularly as indicated in the manual.

The instructions, cautions and warnings written above as well as in the in Manual cannot cover all possible conditions and situations that may occur. The common sense for safety must be always in the mind of the operator. For damages caused through willful misconduct or gross negligence, the lift manufacturer or its distributors are excluded of liability.

	WARNING
	Travelling on the load carrying devices is forbidden.
	WARNING
	The field of motion shall be free of obstructions.
	WARNING
	Avoid excessive rocking of vehicle while on the lift.
	DANGER
	Never raise just one end, one corner or one side of vehicle.
	DANGER
	Do not remove, modify or interrupt safety related components or devices.

1.5 Potential safety risks

1.5.1 Mains voltage



Insulation damage and other faults may result in accessible components being live

Safety measures:

- Only ever use the power cord provided or a tested power cord.
- Replace wires with damaged insulation.
- Do not open the operating unit.

1.5.2 Risk of injury, danger of crushing

In the event of excessive vehicle weight, incorrect mounting of the vehicle or on removing heavy object, there is a risk of the vehicle falling off the lifting platform or tipping up.

Safety measures:

- The lifting platform is only ever to be employed for the intended purpose.
- Carefully study and heed all the information given in section 1.4.
- Observe the warning notices for operation.

1.6 Noise level

Noise emitted during operating the lift should be less than 70dB(A). For your health consideration, it is suggested to place a noise detector in your working area.

PACKING, STORAGE AND TRANSPORTATION

Packing, lifting, handling, transporting operations must be performed only by experienced personnel with appropriate knowledge of the lift and after reading this manual.

2.1 The lift was dismantled into 3 parts for transportation

<i>Name</i>	<i>Packed by</i>	<i>Dimension(mm)</i>	<i>Weight(kg)</i>	<i>Quantity</i>
<i>Control cabinet</i>	<i>Wooden case</i>	<i>540*430*1150</i>	<i>75</i>	<i>1</i>
<i>Lifting platform</i>	<i>Carton with wooden base</i>	<i>2050*2050*200</i>	<i>545</i>	<i>1</i>
<i>Portable kit (Optional)</i>	<i>Carton</i>	<i>310*220*120</i>	<i>16</i>	<i>1</i>

2.2 Storage

The packs must be kept in a covered and protected area in a temperature range of -10°C to +40°C. They must not be exposed to direct sunlight, rain or water.

Stacking the packs

We advise against stacking because the packs are not designed for this type of storage. The narrow base, heavy weight and large size of the packs make stacking difficult and potentially dangerous.

If stacking is unavoidable, use all appropriate precautions:

-Never stack to more than 2 meters in height.

-Never make stacks of single packs. Always stack pairs of packs in a cross pattern so that the base is bigger and the resulting stack is more stable. Once the stack is complete, restrain it using straps, ropes or other suitable methods.

A maximum of two packs can be stacked on lorries, in containers, and in railway wagons, on condition that the packs are strapped together and restrained to stop them falling.

2.3 Lifting and handling

The packs can be lifted and transported only by using lift trucks.

Opening the packs

When the lift is delivered, make sure that it has not been damaged during transportation and that all the parts are present.

Packs must be opened adopting all the precautions required to avoid injury to persons (Keep at a safe distance when cutting the straps) or damage to parts of the machine (Be careful that no parts are dropped while you are opening the packing)

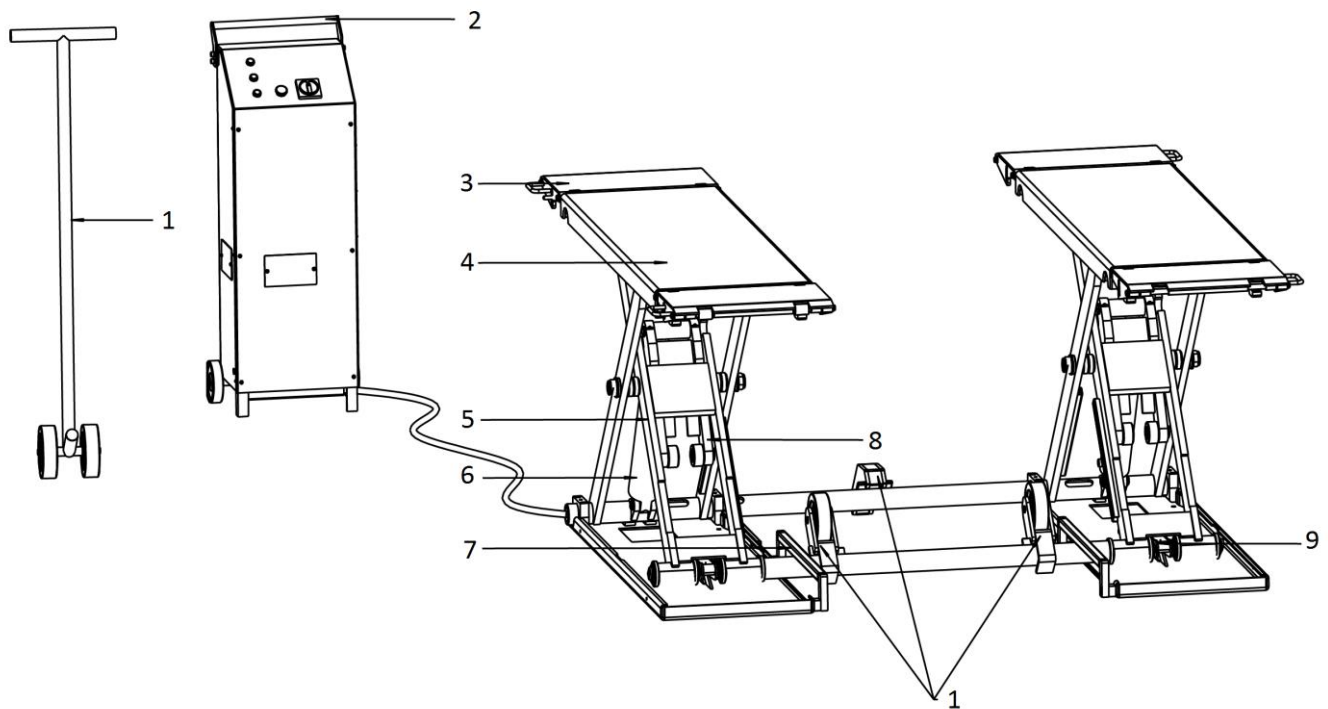
Take special care with the hydraulic power unit, the control panel and the platform cylinder.

PRODUCT DESCRIPTIONS

3.1 General descriptions

This model is chassis supporting vehicle lift for road vehicles. It is driven by an electro-hydraulic system and designed for mobile use with a maximum lifting height of 1000mm. The gear pump delivers hydraulic oil to oil cylinders and pushes upwards pistons to raise the platforms. In the process of rising, the mechanical locking unit ensures no unexpected fall caused by failure of hydraulic system. Besides, designs like, 24V working voltage of control box and limit switch, anti-surge valves, etc. have fully considered operator's personal security.

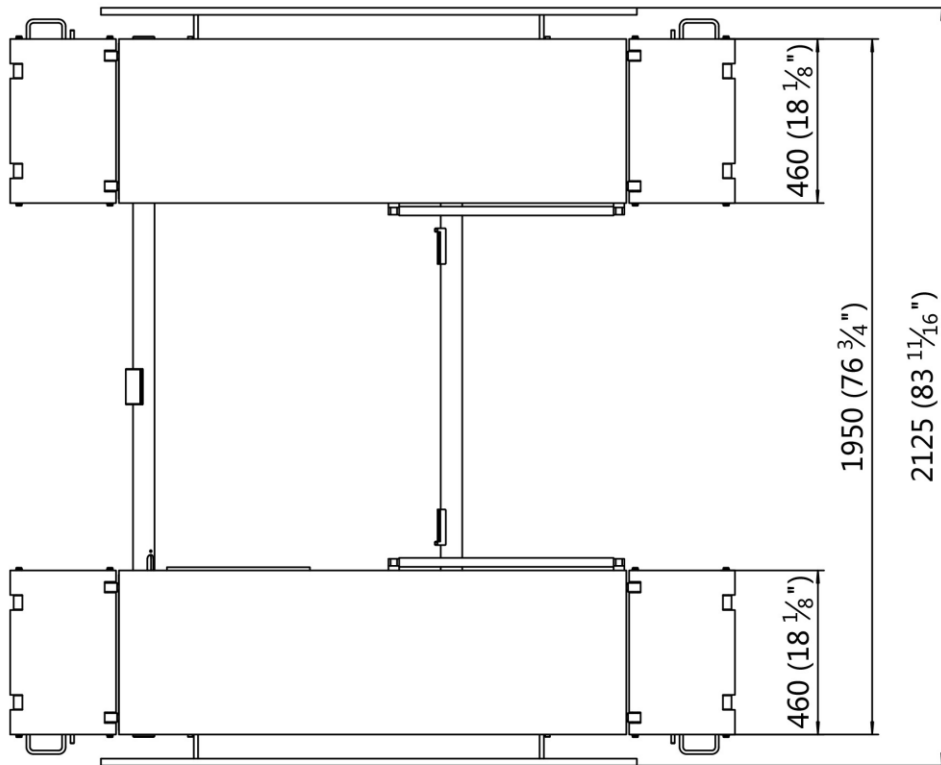
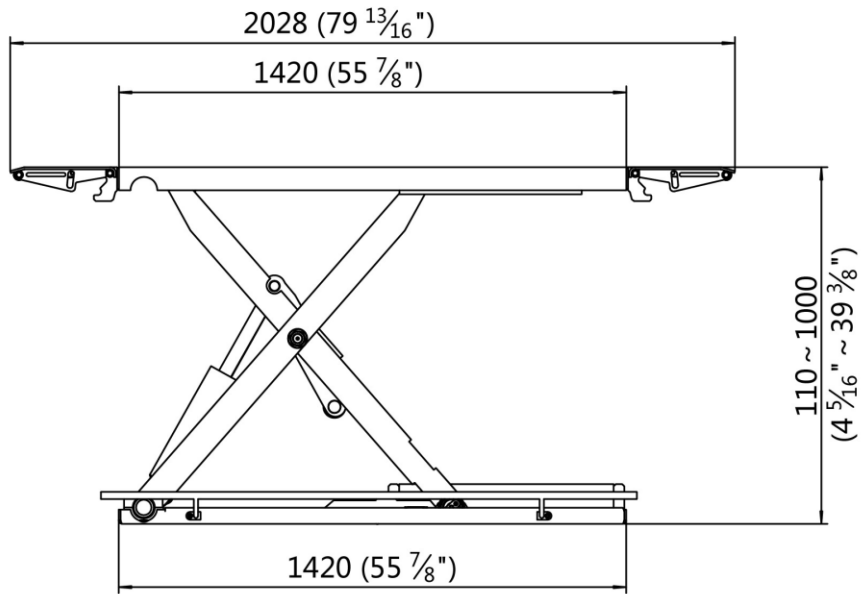
3.2 Construction of the lift



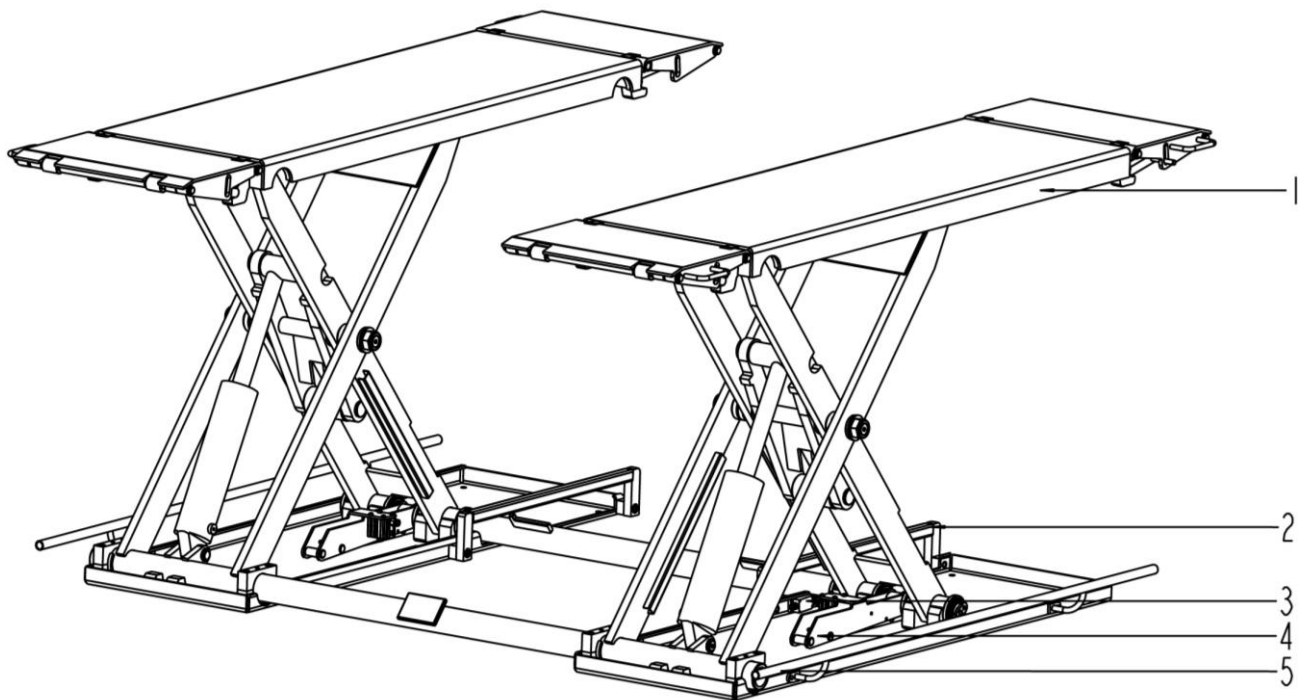
1. Mobile kit (Optional)
2. Operation unit
3. Drive-on ramp
4. Lifting platform
5. Support scissor bracket
6. Oil cylinder
7. Tip-off protection unit
8. Start plate
9. Mechanical safety lock



3.3 Dimensions



3.4 Safety device descriptions



1. *Tip-off protection under the platform*
2. *Tip-off protection fender*
3. *Max height limit switch*
4. *Mechanical safety lock*
5. *Feet protection fender*

3.5 Technical data

Rated capacity	3500kg
Full raised height	1000mm
Initial height	110mm
Full raised time (with rated load)	≤40s
Full lowered time (with rated load)	≤15s
Hydraulic working pressure	24 MPa
Motor	2.2kW
Oil tank	6L

INSTALLATION INSTRUCTIONS

4.1 Preparations before installation

4.1.1 Space requirements.

Refer to 3.3 for the dimensions of the lift. There must also be a clearance of at least 1 meter between the lifting platform and fixed elements (e.g. wall) in all lifting positions. There must be sufficient space at the ends of the lifting platform for driving vehicles on and off.

To stop vehicles colliding with the ceiling, it is advisable to fit an overhead light barrier in low ceiling buildings.

4.1.2 Foundations and connections

Only use this lift on a surface that is stable, level and dry and not slippery, and capable of sustaining the load. This lift must be installed on a solid level concrete floor with no more than 3-degrees of slope. Failure to do so could cause personal injury or death. Do not install or use the lift on any asphalt surface.

The user must have the following work performed before erecting the lift.

- Construction of the foundation following consultation with the manufacturer's customer service or an authorized service agent.
- Routing of the wiring to the installation location. Refer also to the corresponding information on the name plate and in the operation instructions. Before doing electrical connection, make sure the lift is electrically adapt to the local power supply.
- The user must provide fuse protection for the connection. Requirements for power supply cable of the installation site: at least 2.5mm² wire core for 3Ph power and 4.0mm² wire core for 1Ph power. *Attention: electrical system connection must be done by licensed technicians.*
- Routing of the compressed air connection to the installation location.

4.1.3 Foundations preparations

There must be a clearance of at least 1 meter between the lifting platform and fixed elements (e.g. wall) in all lifting positions.

There must also be sufficient space for driving vehicles on and off.

C25-C30 concrete foundation with a minimum thickness of 150mm.

Surface: Horizontal and even (Gradients max. 0.5 %).

Newly built concrete ground must be older than 20days.

4.1.4 Tools and equipment needed for installation

Tool name	Specification	Qty
Electrical drill (Only necessary to fixed installation)	With D12 drill bit.	1
Open spanner	D17-19mm	2
Cross socket screw driver	PH2	1
Socket spanner	D24mm	1
Lifting equipment	Capacity 1000kg	1

4.1.5 Checking parts

Unfold the package and check if any parts missed as per the following list. Do not hesitate to contact us in case any parts missed, but if you do not contact us and insist installing upon the lack of some parts, we as well as our dealers will not bear any responsibility for this and will charge for any parts subsequently demanded by the buyer.



S/N	Name	Specification	Qty
1	MR35 Mechanical Assembly	MR35-00	1
2	Portable kit		Optional
2.1	Wheel	MR30-A25-B1	2
2.2	Prop trough	MR30-A25-B2	1
2.3	All directional wheel	MR30-A25-B3	1
3	Feet protection fenders	MR30-A1-B7	2
4	Power and control unit	MR30-A24	1
5	Rubber pad	38*120*100	4
6	Hex socket cylinder head screw	M8*12	4

4.2 Installation attentions

4.2.1 Joints of oil hoses and wires must be well connected in order to avoid leakage of oil hose and looseness of electrical wires.

4.2.2 All bolts should be firmly screwed up.

4.2.3 Do not place any vehicle on the lift in the case of trial running.

4.3 General Installation Steps

Step 1: Place the lifting platform at expected installation site.

Please do read and understand this manual thoroughly before next step.

Step 2: Dismantle the package of the lifting platforms.

Remove the carton and packing films wrapped on the platform.

Avoid scratching the paint and hoses.

Step 3: Open the package of the control cabinet and take out accessories in it.

Step 4: Connect oil hoses.

Refer to Annex 3.

Connect the fitting of oil hose and its tie-in on the hydraulic block tightly.

Attention: Do not contaminate the hydraulic components during the connection.

Step 5: Connect electrical system.

Refer to Annex 2.

Read the name plate of the motor and understand the wiring diagram before connecting the power supply.

Open the control box and connect electrical wires respectively with the terminals reserved in it.

Pay attention to the number tubes attached with each wire. Wires and terminals with the same number marking are going to be connected together.

Step 6: Fill with hydraulic oil.

CLEAN AND FRESH OIL ONLY. DON'T FILL THE TANK COMPLETELY FULL.

Lift must be fully lowered before changing or adding hydraulic oil

Prepare 5 liters of hydraulic oil. The level of oil shall reach the tippets volume mark of the tank.

Add more oil after running the lift for several cycles until the lift can rise to the maximum lifting height.

Note: It is suggested to use HM NO.46 hydraulic oil. Use HM NO.32 hydraulic oil when average temperature of the location is 10 degree Celsius. **Change the oil 6 months after initial use and change once per year thereafter.**

Step 7: Trial running.
Get familiar with lift controls before loading vehicle onto the lift.

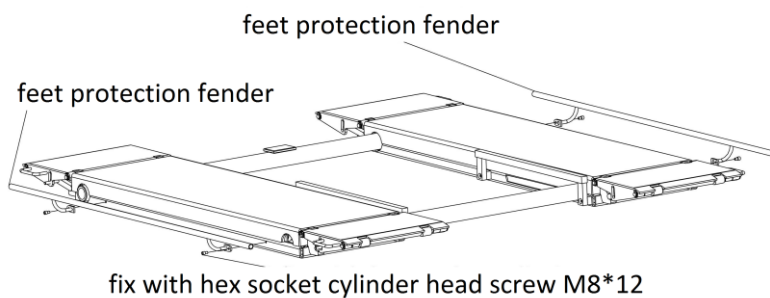
No abnormal sound or leakage before loading.

Run the lift for 5-6 cycles without load. The cylinder is self-bleeding. After bleeding system, fluid level in power unit reservoir may be down.

Add more oil if necessary to raise lift to full height. It is only necessary to add oil to raise lift to full height.

(For three phase power supply, if the lift doesn't raise and the motor may turn in the wrong direction, in such event, interchange wires U, V in the control cabinet).

Note: Refer to Annex 1 for fixed installation.

Step 8: Fix the feet protection fenders.

4.4 Items to be checked after installation.

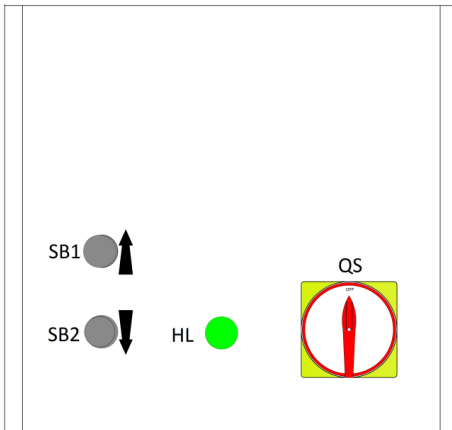
S/N	Check items	YES	NO
1	Rising speed $\geq 20\text{mm/s}$;	√	
2	Noise with rated load $\leq 75\text{dB(A)}$;	√	
3	Grounding resistance: not bigger than 4Ω ;	√	
4	Mechanical locks are robust and synchronized when running with rated load ;	√	
5	If the control button works as "hold to run" ;	√	
6	If limit switches work well;	√	
7	If grounding wire is connected;	√	
8	If rise and lower smoothly;	√	
9	If there is no abnormal noise during running with rated load;	√	
10	If there is no oil leakage when running with rated load;	√	
11	If there is no air leakage when running with rated load;	√	
12	If all bolts, nuts or circlips are well secured;	√	
13	If max lifting height is 1000mm;	√	
14	If safety advices, name plate and logos are clear;	√	

OPERATION INSTRUCTIONS

5.1 Precautions

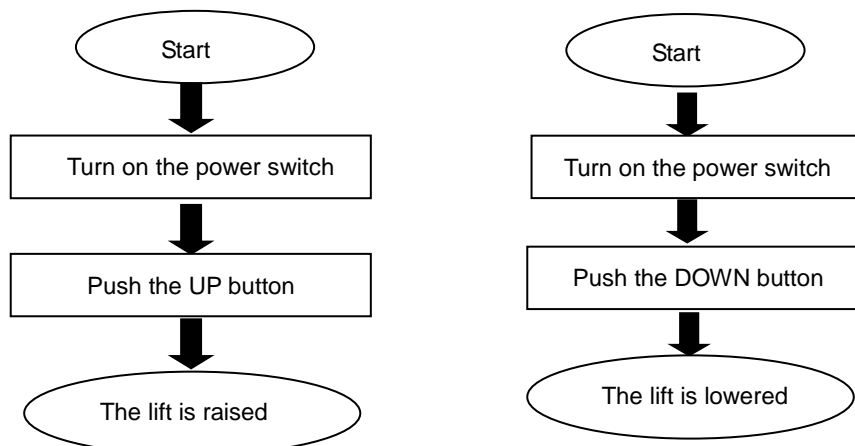
- 5.1.1. Read and digest the complete operation instructions before operating the lift.
- 5.1.2. Only authorized persons are permitted to operate the lift.
- 5.1.3. Do not try to raise the vehicle with excessive length or width.
- 5.1.4. The space above and below the load as well as of the loading carrying devices shall be free of obstructions.
- 5.1.5. Position supporting pads to pick-up positions recommended by vehicle manufacturers.
- 5.1.6. Check the vehicle after raising a short distance to ensure that it is corrected and safely positioned.
- 5.1.7. The load carrying device shall be observed by the operator throughout the motion of the lift.
- 5.1.8. Avoid excessive rocking of vehicle while on the lift
- 5.1.9. It is forbidden for people to stand in the field of motion during raising or lowering movement.
- 5.1.10. Do not climb onto the load or load carrying device when they are raised.

5.2 Descriptions of control box



Pos.	Name	Function
QS	Power switch	Control main power
HL	Power indicator	Show if electricity is connected
SB1	UP button	Control the rising movement
SB2	DOWN button	Control the lowering movement

5.3 Flow chart for operation



5.4 Operation instructions

The lift must be only used in a static position for lifting and lowering vehicles.

Only use this lift on a surface that is stable and capable of sustaining the load.

Do not use the lift on any asphalt surface.

To avoid personal injury and/or property damage, permit only trained personnel to operate the lift. After reviewing these instructions, get familiar with lift controls by running the lift through a few cycles before loading vehicle on lifting platform.

Always lift the vehicle using all four adapters. Never raise just one end, one corner or one side of vehicle.

Raise the lift

Make sure vehicle is neither front nor rear heavy and center of balance should be midway between adapters and centered over the lift.

1. Make sure that you have read and understood the operation manual before operation.
2. Load vehicle on lift carefully. Position the lift adapters to contact at the vehicle manufacturer's recommended lift points.
3. Push the UP button to raise lift until adapters contact vehicle.
4. Check adapters for secure contact with vehicle. Raise lift to expected working height.

Lower the lift

When lowering the lift pay careful attention that all personnel and objects are kept clear.

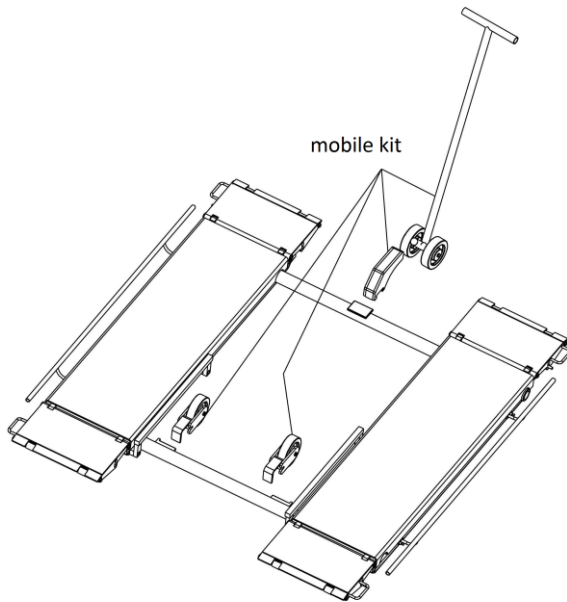
1. Push the DOWN button to lower the lifting platform.
2. After the lifting platform is fully lowered, remove rubber pads and other tools to provide an unobstructed exit for moving vehicle from the lift area.
3. Drive the vehicle away.

5.5 Install the optional mobile kit to move the lift

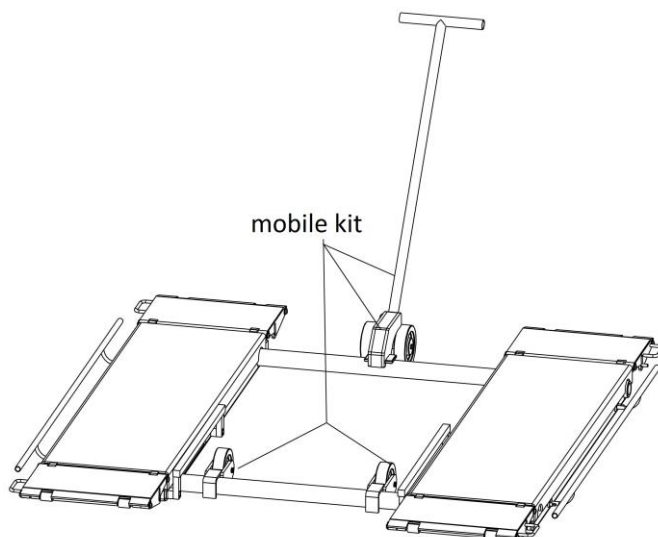


**Always take away all accessories of the optional kit for movable use before loading.
Never attempt to transport the lift when it is loaded.**

1. Raise the platform about 500mm above the floor and fix the mobile kit as indicated in the below fig.



2. Lower the platform to the lowest position.



3. Move the lift

TROUBLE SHOOTING

ATTENTION: If the trouble could not be fixed by yourself, please do not hesitate to contact us for help .The troubles will be judged and solved much faster if more details or pictures of the trouble could be provided.

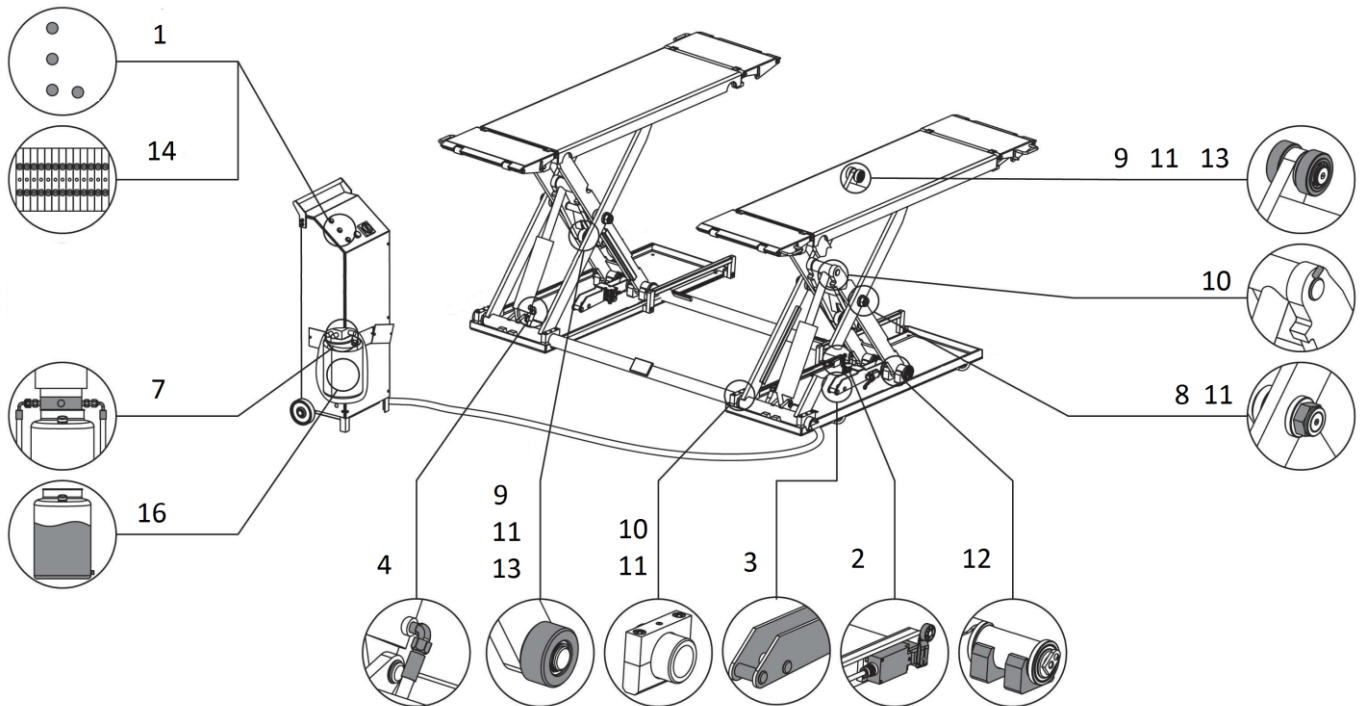
TROUBLES	CAUSES	SOLUTIONS
Motor does not run and will not raise.	Loose wire connection	Check and make a good connection.
	Burnt motor.	Replace it.
	Damaged limit switch or its wire connection is loose.	Adjust or replace the limit switch.
Motor runs but will not raise.	The motor run reversely.	Check the wire connection.
	Overflow valve is not well screwed up or jammed.	Clean or make adjustment
	Damaged gear pump.	Replace it.
	Too low oil level.	Add oil.
	The hose connection is loose.	Tighten it.
	The cushion valve is not well screwed up or jammed.	Clean or make adjustment
Platforms go down slowly after being raised.	The oil hose leaks.	Check or replace it.
	Untightened oil cylinder.	Replace the seal.
	The single way valve leaks.	Clean or replace it.
	Solenoid valve fails to work well.	Clean or replace it.
	Unloading valve leaks.	Check and adjust the tightness.
Raising too slow.	Jammed oil filter	Clean or replace it.
	Too low oil level.	Add oil.
	The overflow valve is not adjusted to the right position.	Make adjustment.
	Too hot hydraulic oil (above 45°) .	Change the oil.
	Abraded seal of the cylinder	Replace the seal.
Lowering too slow.	Jammed throttle valve	Clean or replace it.
	Dirty hydraulic oil	Clean or replace.
	Jammed anti-surge valve	Change the oil.
	Jammed oil hose	Clean it.

MAINTENANCE

Easy and low cost routine maintenance can ensure the lift work normally and safely.

Follow the below routine maintenance schedule with reference to the actual working condition and frequency of your lift.

Lubricate moving parts with No.1 lithium base grease.



S/N	Components	Methods	Period
1	Control buttons	Check if control buttons work as "hold- to -run " and check if they work as the function indicated.	Every day
2	Max height limit switch	Push the UP button and inspect and ensure the lifting platform stops rising at maximum lifting height.	Every day
3	Mechanical safety catch	Check if both mechanical catches can engage and disengage simultaneously by pushing control buttons.	Every day
4	Oil hoses and connectors	Inspect to ensure no leakage before using the lift.	Every day
7	Hydraulic block and valves	Inspect if the valves leak or not. Clean or change the valve if any leakage.	Every month
8	Self-locking nut	Check with torque spanner. The torque should be no less than 330N.m.	Every month
9	Circlips	Inspect if any circlip goes off its groove. Make sure they are positioned in the grooves.	Every month
10	Locking screw	Inspect to ensure the screws are well fastened.	Every month
11	Joint shafts	Add grease into the oil cups.	Every 3 months
12	Sliders	Add grease onto the running tracks to ensure smooth running. Check if the sliders are over-worn. Change over-worn sliders.	Every 3 months

S/N	Components	Methods	Period
13	Upside rollers and start rollers	Push the UP and DOWN button to check if the roller is over-worn or cannot roll. Add grease to ensure smooth running. Change over-worn rollers.	Every 3 months
14	Terminals in the control unit	Open the control unit, inspect the wire terminals and screw firmly if any terminals become loose.	Every 3 months
	Whole Lift	Running the lift for several cycles with and without rated load. The lift can run steadily and smoothly with no abnormal noise.	Every 3 months
16	Hydraulic oil	Change the oil 6 months after initial use and once per year thereafter. Inspect the hydraulic oil and change the oil if the oil becomes black or there is dirt in the oil tank.	Every year

If users stick to the above maintenance requirements, the lift will always keep a good working condition and its service life could be extended.

Annex 1, Floor plan for fixed installation

Indoor installation only.

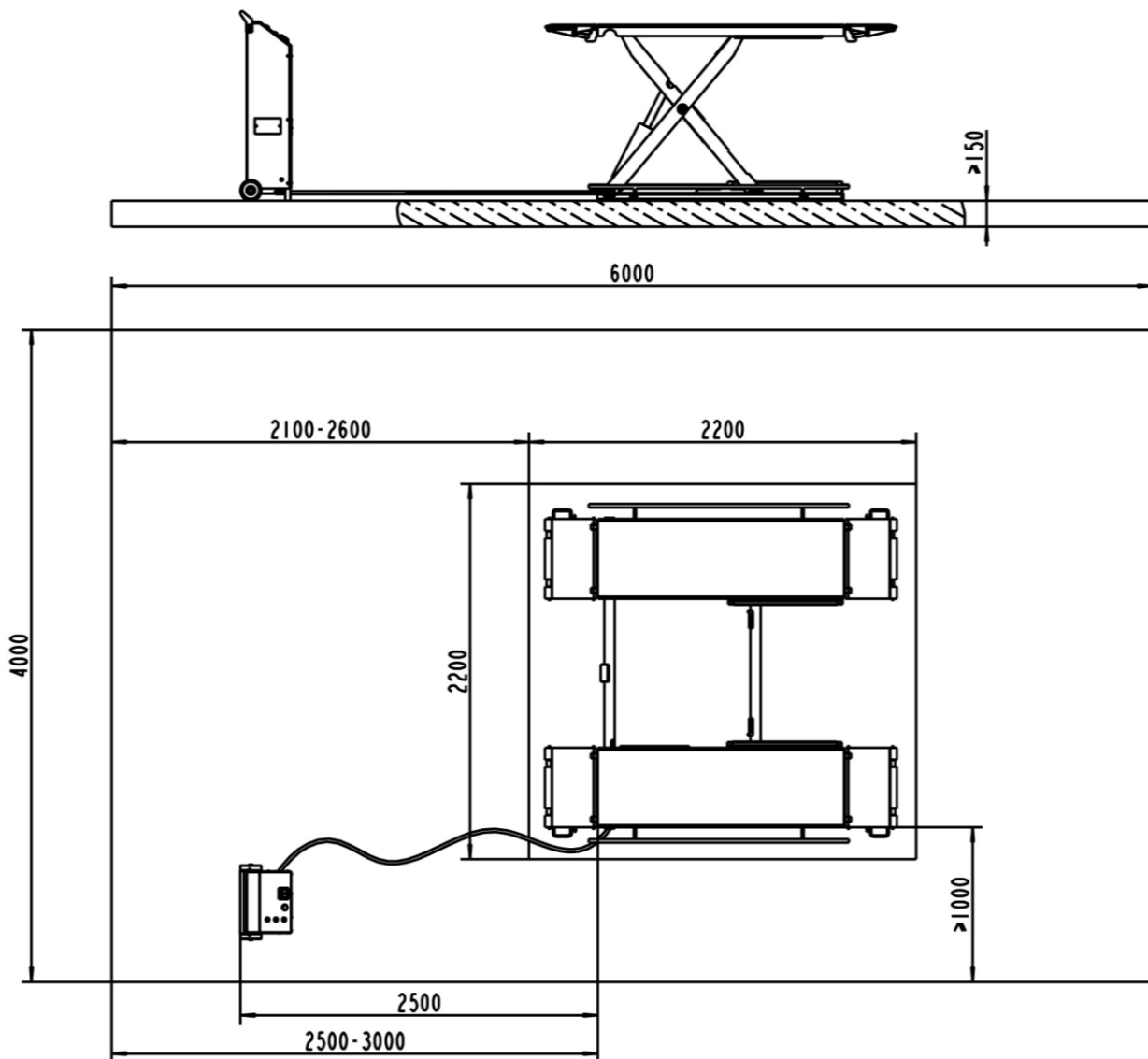
There must also be a clearance of at least 1 meter between the lifting platform and fixed elements (e.g. wall) in all lifting positions. There must be sufficient space for driving vehicles on and off.

C25/30 concrete foundation with a minimum thickness of 150mm.

Surface: Horizontal and even (Gradients max. 0.5 %)

Newly built concrete ground must be older than 20days.

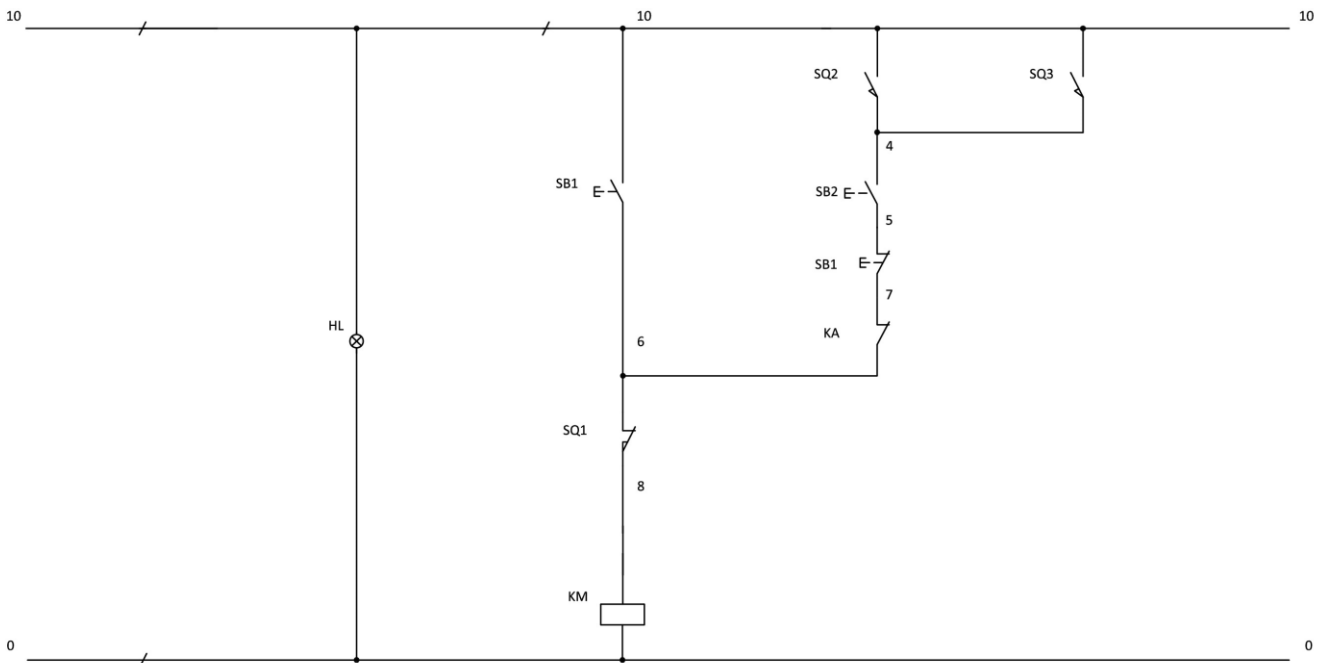
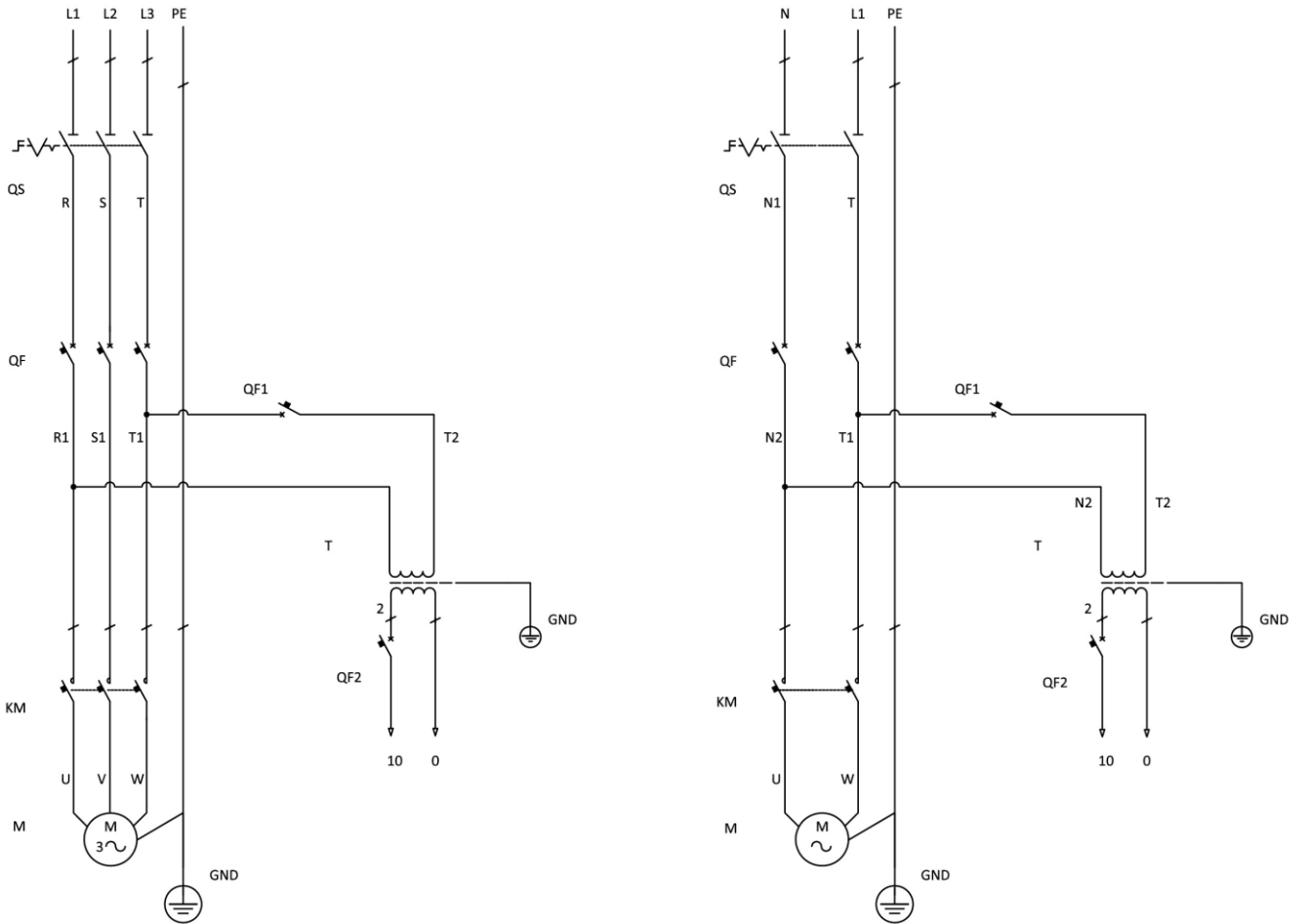
In mm.

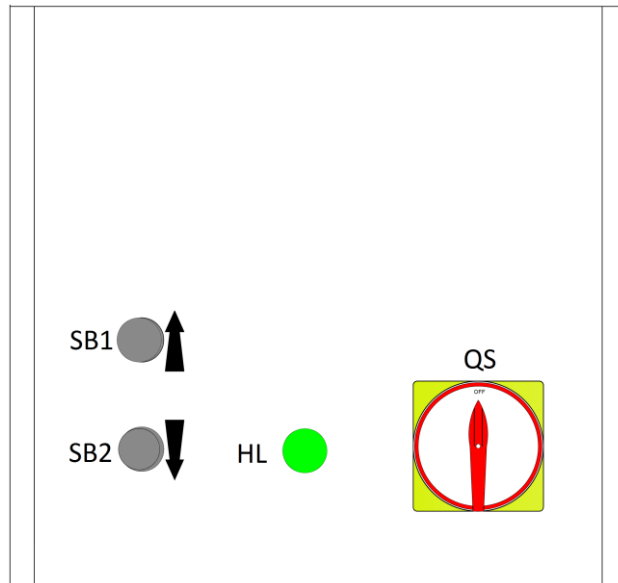
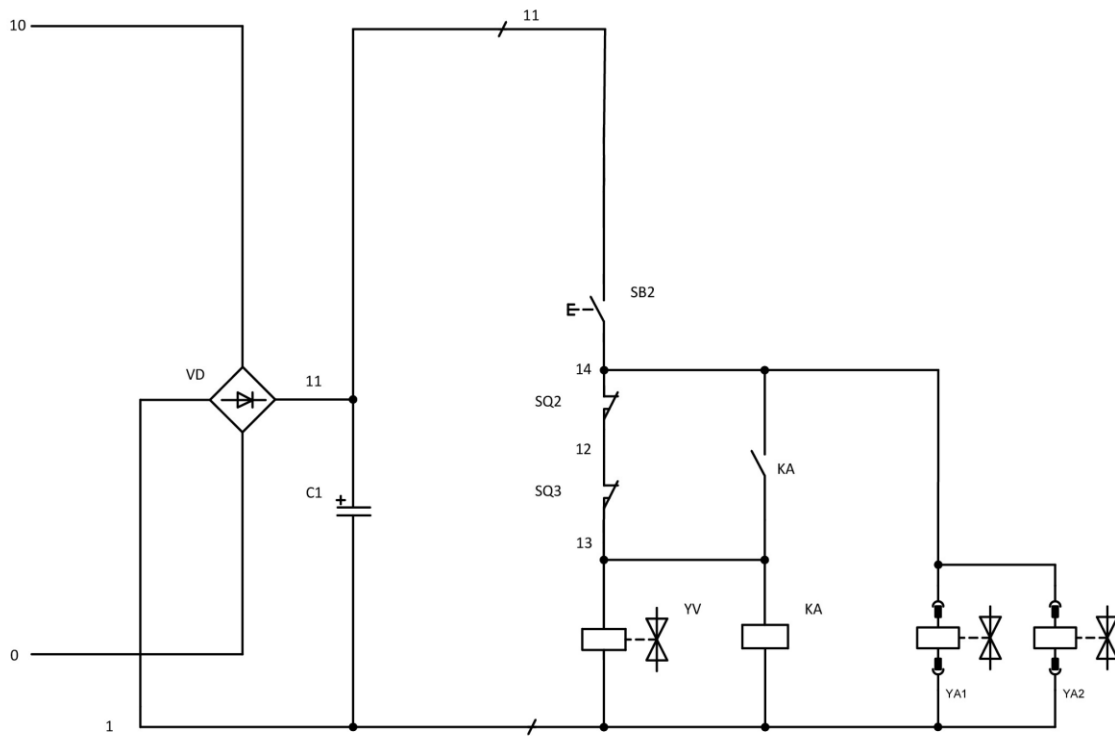


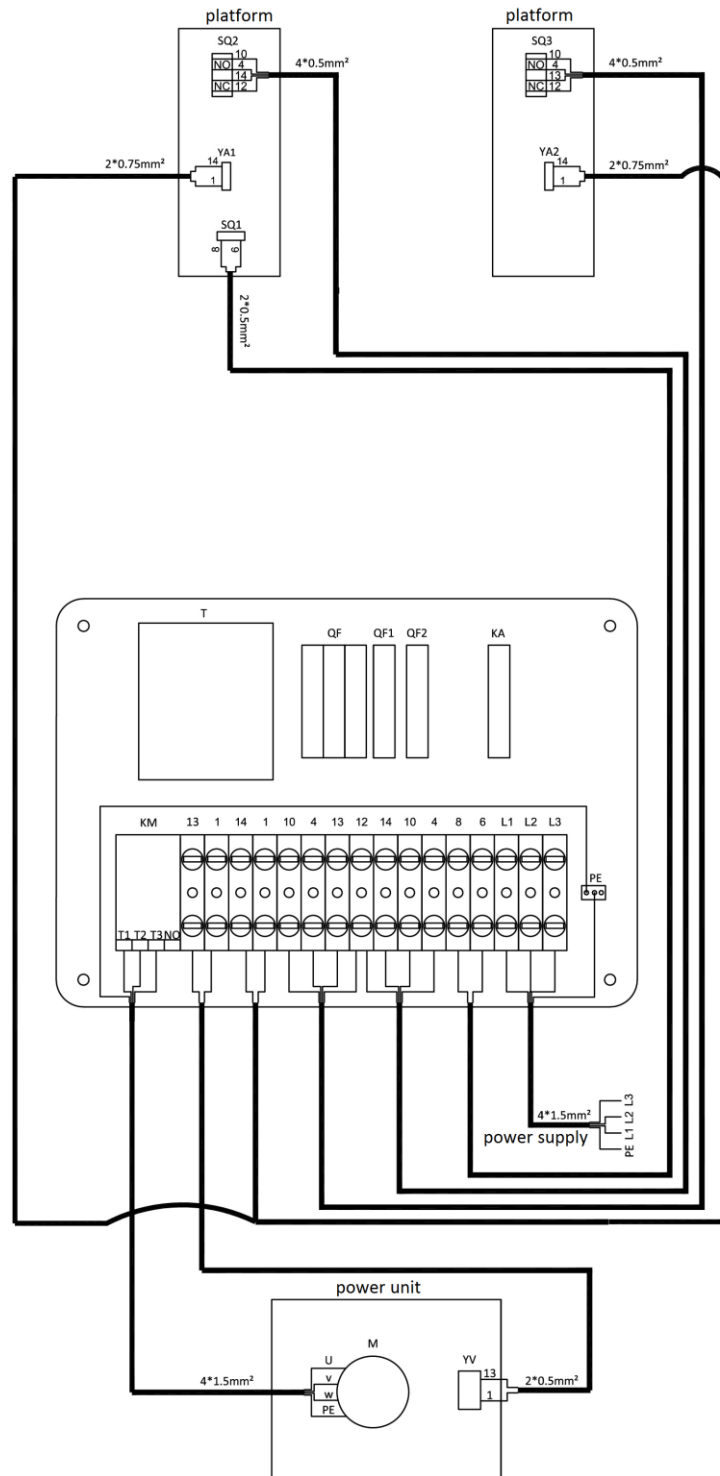


Annex 2, Electrical diagrams and parts list

(Note: For the specific requirements on voltage, the actual voltage of your lift may differ with the following diagram)







NOTE: There's no internal wire connected with terminal 12.

The two wires which comes from SQ2 and SQ3 and marked with NO.12 share the same terminal 12.

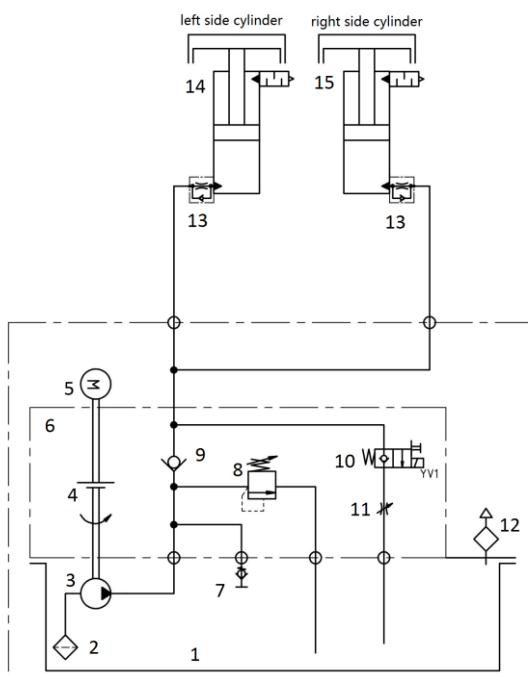
Supply cable	Yellow-Green	Blue	Other colors
3 wires	Earth wire	Neutral wire	Phase wire
5 wires	Earth wire	Neutral wire	Phase wire
Supply cable	Yellow-Green	Other colors	
4 wires	Earth wire	Phase wire	

Pos.	Code	Description	Qty
T	320104010	Transformer 380V400V415V-24V	1
	320104009	Transformer 220V230V240V-24V	1
SQ1,SQ2,SQ3	320301011	Limit switch (TZ8108)	3
YA1,YA2	330310018B	Electromagnet	2
QS	320304001	Power switch	1
SB1	320402013	Button	1
SB2	320402016	Button	1
KA	320601005	Relay	1
	320601009	Relay holder	1
	320601018	Relay fixer	2
QF	320802001	Circuit breaker (1Ph)	1
	320801001	Circuit breaker(3Ph)	1
QF1	320803003	Circuit breaker	1
QF2	320803006	Circuit breaker	1
KM	320901001	AC contactor	1
C	321001004	Capacitor	1
VD	321002001	Rectifier	1
HL	321201001	Power indicator	1
	320701019	Plug (1Ph) (Optional)	1
	920201157	Plug (3Ph) (Optional)	1

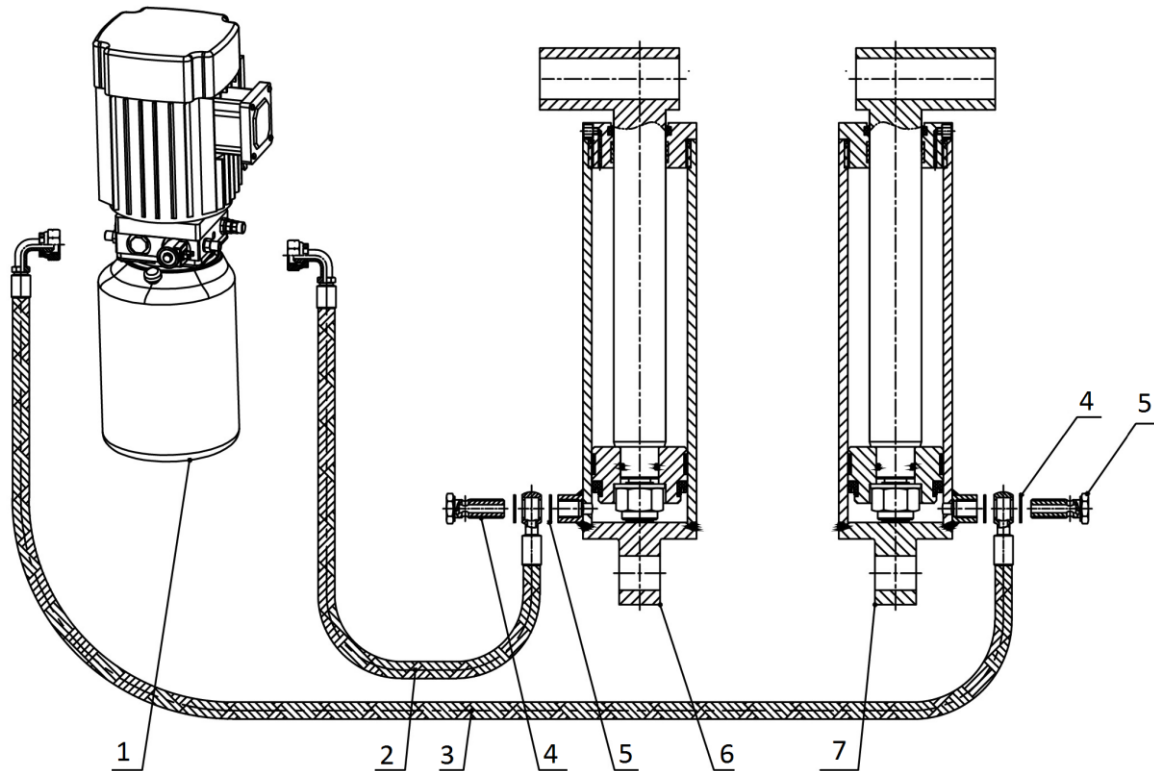
NOTE: For power supply of other voltage, the transformer is different.

Please check with our customer service people when order spare parts.

Annex 3, Hydraulic diagrams and parts list



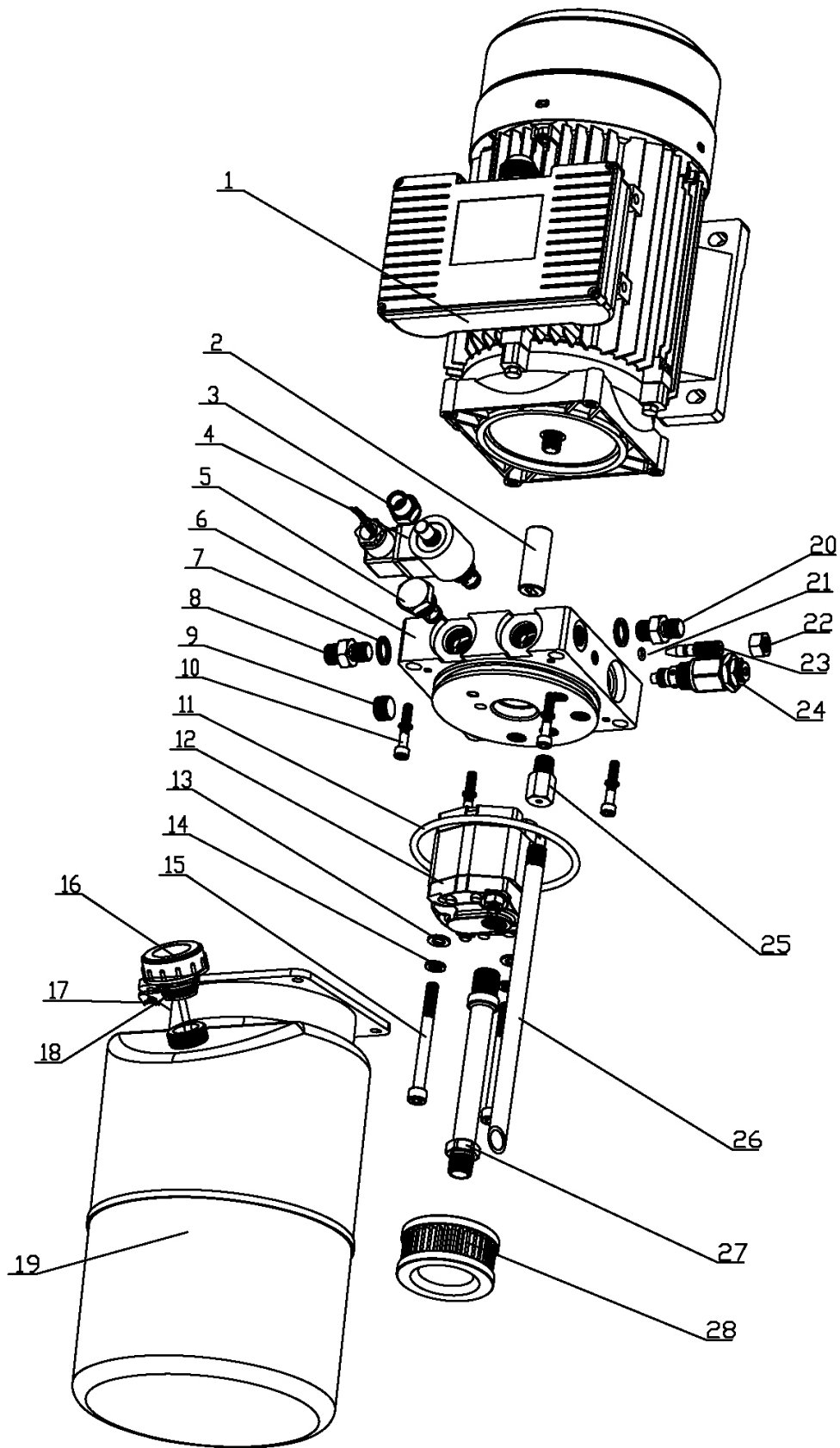
- 1.oil tank
- 2.oil sucking filter
- 3.gear pump
- 4.coupling
- 5.motor
- 6.hydraulic block
- 7.cushion valve
- 8.overflow valve
- 9.single way valve
- 10.solenoid unloading valve
- 11.throttle valve
- 12.oil tank cover
- 13.hose connector (single way throttle valve included)
- 14.cylinder
- 15.cylinder



Pos.	Code	Description	Specification	Qty
1		Hydraulic power unit	2.2kW	1
2	624001862	Rubber oil hose	L=3350	1
3	624001878	Rubber oil hose	L=4770	1
4	410281130	Oil cylinder connector	CJ-A12-B5-C10	2
5	207103025	Composite washer	13_7X20X1_5	4
6	615050001	MR35 oil cylinder	MR35-A15-B1	1
7	615050002	MR35 oil cylinder	MR35-A15-B2	1

Seal ring

Cylinder Code	Seal ring type	Seal ring code	Cylinder Specification	Qty
615050001/ 615050002	Y Seal ring	207102018	B7-70*55*9	1
	Y Seal ring	207102030	B7-70*60*6	1
	Guiding ring	207106031	70*66*15	1
	Guiding ring	207106032	38*42*15	1
	Dust proof ring	207105004	BHS38*46*6	1

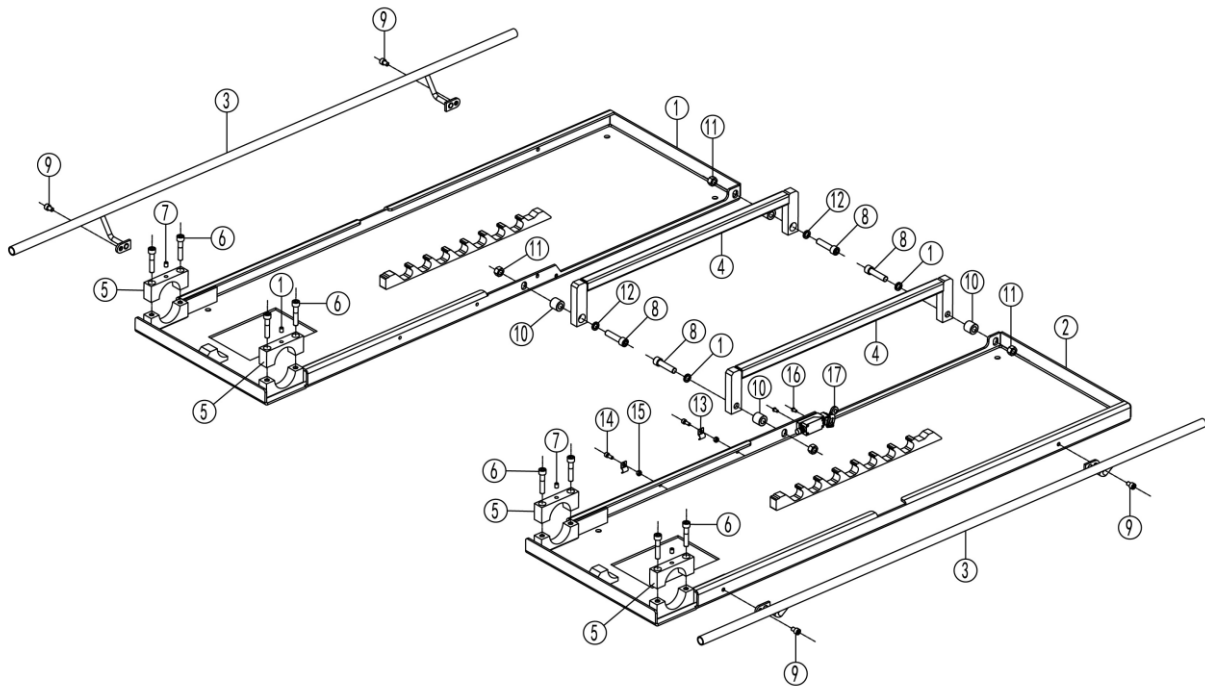




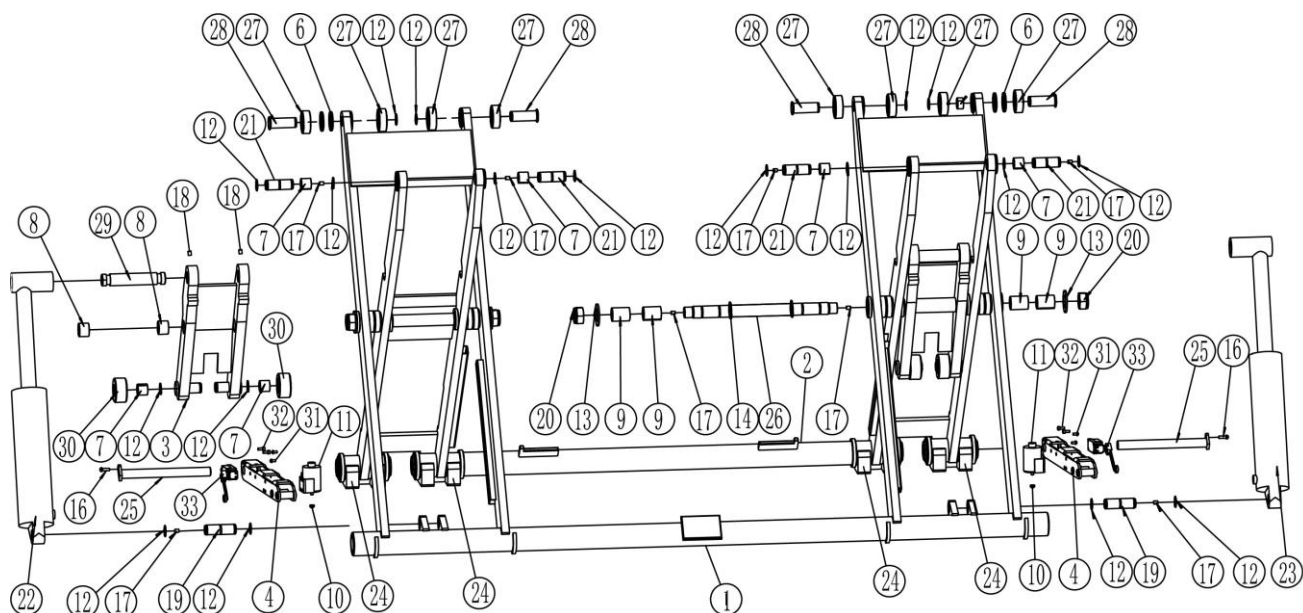
Pos.	Code	Description	Specification	Qty
1	320204295	Motor-230V	230V-2.2KW -1PH-50HZ-2P	1
1	320204296	Motor-400V	400V-2.2KW -3PH-50HZ-2P	1
2	330404006	Coupling	48mm (YBZ-F2.1D4H1/1-03)	1
3	203204102	Locking nut	FHLM-1/2-20UNF	1
4	330311005	Solenoid valve	24DC(Ketai) (LSV-08-2NCP-M-2H)	1
5	330302008	Non-return valve	YBZ-E2D311/1-03	1
6	330105005	Valve holder	LBZ-T2BK-13	1
7	207103019	Composite washer	M14	2
8	310101008	Connector	M14*1.5-G1/4 inside cone	1
9	210101014	Fitting	Z3/8	1
10	201101100	Bolt	M6*50(NJLJD)	4
11	207101098	Type O seal ring	109*5.3	2
12	330201902	Gear pump	CBKA-F2.1F	2
13	204101005	Flat washer	D8-GB95	1
14	204201013	Spring washer	M8	4
15	202109072	Hex socket cylinder head screw	M8x85-GB70_1	4
16	330405067	Breather (lid of the tank)	M25	1
17	202109144	Bolt	M5x18	1
18	410010091	Reinforced plate	6254E-A4-B12(6254A-A5-B12 50*50*4)	4
19	330405014	Oil tank	6L	1
20	310101008	Connector	M14*1.5-G1/4 inside cone	1
21	207101099	Type O seal ring	5*1.8	4
22	203102003	Hex thin nut	M10x1-GB6172_1	1
23	330305015	Throttle valve	YBZ-E2D311/1-11A	1
24	330304010	Over-flow valve	DANRV-08-50	1
25	330301003	Cushion valve	HCF-Z1/4	1
26	330402009	Oil-return tube	YBZ-G3J4H43/1-03	1
27	330401017	Oil-suck tube	YBZ-TJYG-160	1
28	330403003	Filter	YBZ-E2D311/1-10	1

NOTE: The motor is different for different voltage or capacity.

Please check with our customer service people when order spare parts.

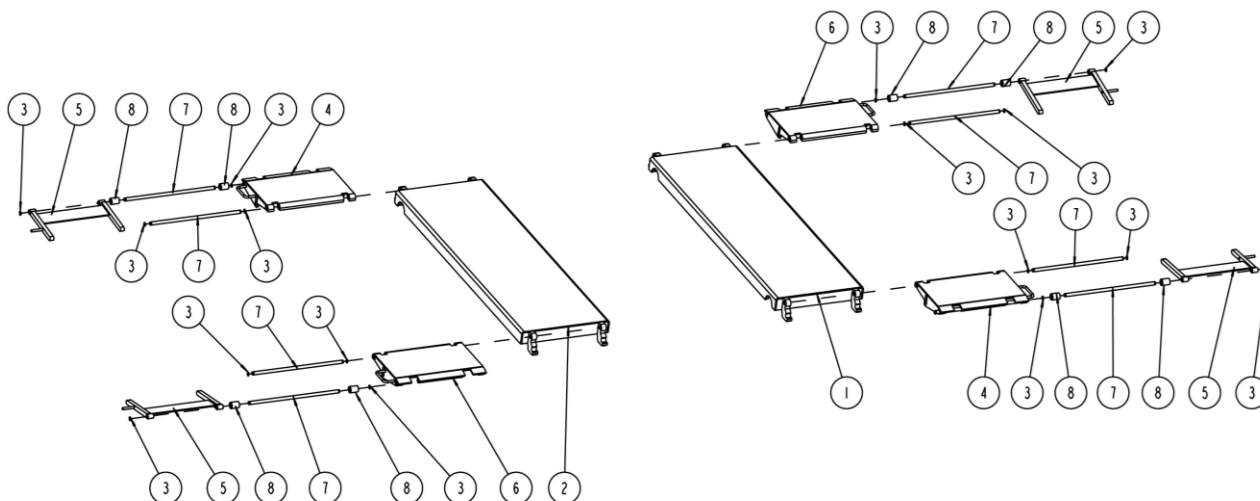
Annex 4, Mechanical exploded drawings and parts list


Pos.	Code	Description	Specification	Qty
1	612067055	Welded base frame assembly A (Galvanized)	MR35-A01-B01	1
2	612067056	Welded base frame assembly B (Galvanized)	MR35-A02-B01	1
3	612018002	Feet protection fender (Galvanized)	MR30-A1-B7	2
4	612018024B	Connection bar (Galvanized)	NORDIC-MR30-A26	2
5	410180271	U block (Galvanized)	MR30-A4	4
6	202109046	Hex socket cylinder head screw	M10x50	8
7	208106002	Oil cup	M8	4
8	202109081	Hex socket cylinder head screw	M12X50-GB70	4
9	202109027	Hex socket cylinder head screw	M8 x 12	4
10	410901876	Spacer	MR30V2-A1-B14	4
11	203103008	Hex locking nut	M12-GB889_1	4
12	204201006	Spring washer	D12-GB93	4
13	206202005	Air hose clip	D8-304	4
14	202109020	Hex socket cylinder head screw	M6X15-GB70_1	4
15	203101004	Hex nut	M6-GB6170	4
16	202101021	Cross socket cap head screw	M5X10-GB818	2
17	320301011	Limit switch	TZ-8108	1



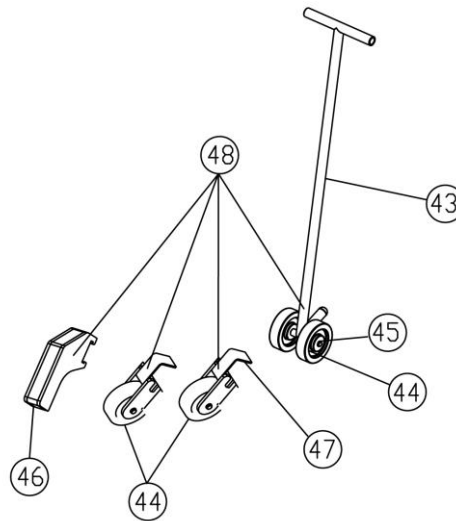
Pos.	Code	Description	Specification	Qty
1	614050001B	Slave arm	MR35-A03-B01	1
2	614050002B	Drive arm	MR35-A03-B02	1
3	614050005	Start plate	MR35-A08-B01	2
4	614901210	Mechanical claw	MR35V2-A9-B1	2
6	204101012	Flat washer	D24-GB95	8
7	205101010	Bearing	2525-SF-1	8
8	205101018	Bearing	3025-SF-1	4
9	205101022	Bearing	3045-SF-1	8
10	420180100	Adjustable head	MR30E-A09-B03	2
11	330310018B	Electromagnet	DCT45X20	2
12	204301009	Circlip	D25_GB894-2	20
13	204101014	Flat washer	M27	2
14	204301011	Circlip	D30-GB894_2	4
16	202101033	Cross socket cap head screw	M6X20-GB818	2
17	208106002	Oil cup	M8-JB7940-4	14
18	202207002	Hex socket tapping screw	M8X16-GB80	4
19	410180031C	Fixing shaft for oil cylinder	MR30-A16	2
20	203103013	Self-locking nut	MR30-A18	4
21	410180051B	Platform fixing shaft	MR30-A21	4
22	615050002	Cylinder 2	MR35-A15-B2	1
23	615050001	Cylinder 1	MR35-A15-B1	1
24	420180040B	Slider	MR30-A5-B6	4
25	612018001	Safety shaft	MR30-A5-B14	2
26	410500101B	X shaft	MR35-A03-B03	2
27	420180020B	UP rolling wheel	MR30-A8	8

Pos.	Code	Description	Specification	Qty
28	410180021	Shaft of up rolling wheel	MR30-A9	4
29	410500241	Cylinder shaft of start plate	MR35-A08-B02	2
30	410500271	Start rolling wheel	MR35-A08-B03	4
31	202101021	Cross socket cap head screw	M5X10	4
32	202109008	Hex socket cylinder head screw	M5X12-GB70_1	4
33	320301011	Limit switch	TZ8108	2



Pos.	Code	Description	Specification	Qty
1	612067057	Platform (Galvanized)	MR35V2-A19-RX	1
2	612067057	Platform (Galvanized)	MR35V2-A19-RX	1
3	204301004	Circlip $\phi 12$	D15_GB894_2	16
4	612018011C	Ramp B assembly (Galvanized)	MR30-A06-B01	2
5	612018016B	Supporting rod (Galvanized)	MR30-A22-B6	2
6	612018009C	Ramp A assembly (Galvanized)	MR30-A07-B01	2
7	410180061	Shaft for the ramp	MR30-A22-B4	8
8	420180010	Small rolling wheel	MR30-A22-B5	8

Mobile kit (optional)



Pos.	Code	Description	Specification	Qty
43	614018015	All directional wheel kit	MR30-A25-B3	1
44	208107002	Wheel	Rubber	4
45	204301006	Circlip D17	Standard	2
46	614018014	Prop trough	MR30-A25-B2	1
47	410901747	Wheel support kit	MR30-A25-B1-C1B	2
48	615018006	Mobile kit	Assembly	1