

Wireless | Independent Columns | HMI Screen | **CE**
 Easy and Convenient | No Steel Ropes

QUICKMULTI



E25



E25
Type M Arms (Optional)



E25

INDEPENDENT TWO COLUMN LIFT

- Each column has an independent control and hydraulic power unit which provides adequate power for fast lifting and make it able to control at either side.
- HMI screen for setting networks and displaying crucial parameters.
- No interconnected ropes, hoses or wires between the two posts provides a free and unobstructed working space.
- Latch Detecting Device, Decide the movement through judging the status of the latch. Necessary for efficient parking at an expected height for chassis maintenance, transmission repair or changing.
- Synchronization is automatically achieved by wireless communication technology and deviation is only allowed within a safe range.
- Pure hydraulic drive, no lifting elements like lead screws, chains or wire ropes. Less maintenance cost in the long run.
- Less installation work and more adaptable to various spaces.
- More flexible three stage arms.
- Detecting device to identify the engagement and disengagement of the mechanical locking unit.
- Optional type-M arms to pick up from the Smart to the long wheelbase MPVs and Vans.



Intelligent Control System



HMI Screen
(Optional weight indicator)



Second Control Box

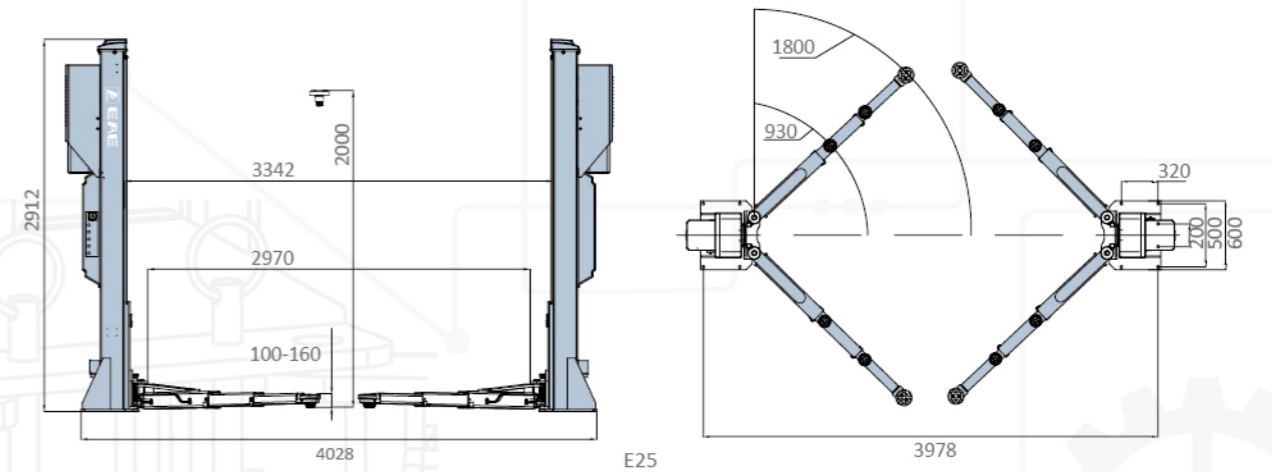


Height Limit Switch and
Displacement Sensor

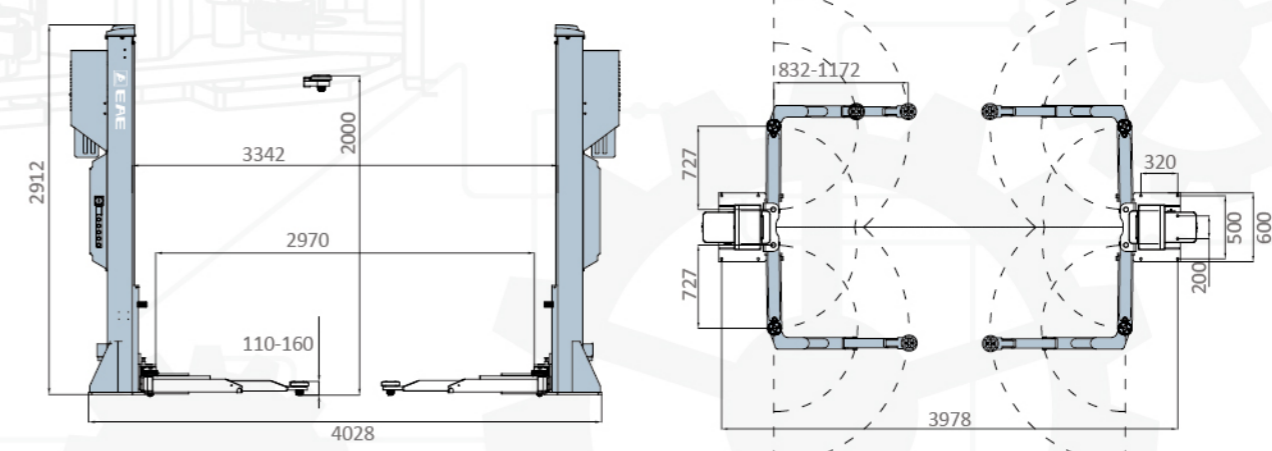


Four 3-Stage Arms

OVERALL DIMENSION



E25



E25
Type C Arms

TECHNICAL DATA

MODEL NO.	E25
Lifting capacity	5.0T
Max lifting height	2000mm
Min height	110mm
Lifting time	Approx. 25S
Motor	3.5kWx2
Drive-through width	2900-3300mm
Overall height	2912mm
Electricity supply	According To Customer Needs



* Max. Lifting height is measured with adjustable screw pads in highest position.
 * Machine shown with optional equipment. Actual product appearance may differ.